



MADE IN USA



AGRI-SERVICES

WIRING HARNESS SPECIALISTS

WWW.WIRINGHARNESSES.COM

CONNECTOR CATALOG

**- REVERSE ENGINEERING
- ADDITIVE MANUFACTURING
- PRODUCT DESIGN**

Agri-Services manufactures obsolete parts for farm tractors and other equipment. Reverse engineering from originals, our products improve on the original design in many ways, including the use of common terminals and modern materials.



BULKHEAD CONNECTORS

28 WAY FIREWALL BULKHEAD

REPLACES: 0628-8890, 0628-8896, 0628-8976

John Deere, Jeep, Case

ASSOCIATED PARTS:

- AG0628-8890
- AG0628-8896
- AG0628-8976 + GASKET
- AG0628-8875_GASKET (NOT SHOWN) \$2.92



AG0628-8890 \$25.17



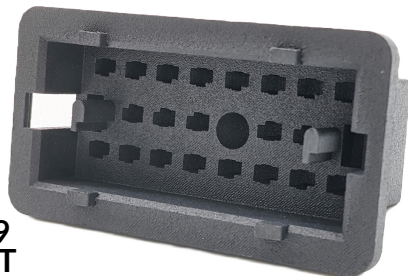
\$92.03 AG0628-8976
INCLUDES SEAL



AG0628-8896 \$39.02
INCLUDES BOLT



AGD3AB-14489 \$72.04



\$78.09 AGD20B-14489
INCLUDES BOLT

40 WAY FIREWALL BULKHEAD

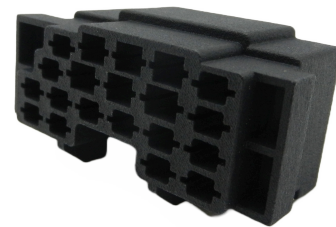
REPLACES: 1201-0289, 1201-0327, 0891-7252

Case, Massey Ferguson

ASSOCIATED PARTS:

- AG1201-0289
- AG0891-7252
- AG1201-0327 + GASKET
- AG12010328_GASKET (NOT SHOWN) \$2.35

\$31.31 AG1201-0289



AG1201-0327 \$113.22
INCLUDES SEAL



\$43.72 AG0891-7252
INCLUDES BOLT

21 WAY FIREWALL BULKHEAD

REPLACES: D3AB-14489, D20B-14489

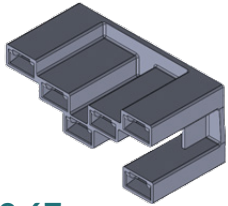
Ford

ASSOCIATED PARTS:

- AGD20B-14489
- AGD3AB-14489

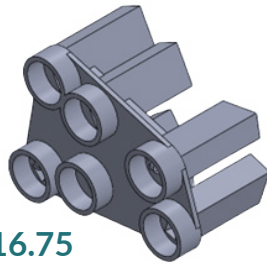
ENGINEERED TO USE MP 480
TERMINALS
ALL FORD CONNECTORS
INTERCHANGE TO ORIGINALS

LIGHT + RELATED CONNECTORS



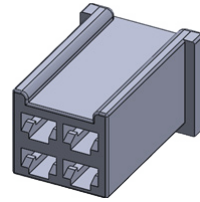
\$9.67

**HOBBS/IHC
TURNSIGNAL SWITCH**
REPL: HOBBS / IHC:
23343 / 121597C1
USES TYP. 56 TERMS
AG #AG23343



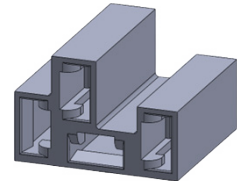
\$16.75

**JOHN DEERE
LIGHT SWITCH**
REPL: AR83425
USES TYP. 56 TERMS
AG # AGAR83425



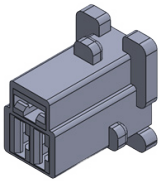
\$2.55

**JOHN DEERE COMPACT
CONNECTOR, INDICATOR LAMP**
AG # AG102722
INCL: 4X .110" FB



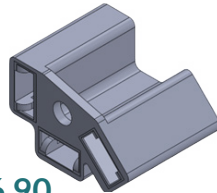
\$4.60

**CASE / IH
CONNECTOR, FLASHER**
AG # AG091522



\$4.06

**JOHN DEERE COMPACT
CONNECTOR, HEADLAMP
HARNESS**
AG #AG102622



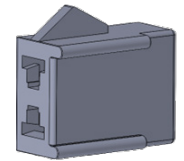
\$6.90

**AGCO
CONNECTOR, 3 WAY, TYP 59
LIGHTS**
REPL: 1204-1307
AG # AG12041307



\$8.85

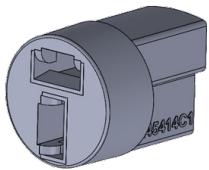
**JOHN DEERE
LAMP SOCKET**
REPL: AT44165N
AG # AGAT44165N



\$3.75

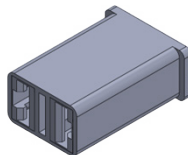
**FORD
REAR LAMP CONNECTOR**
REPL:
3U2Z-14S411-CSA (WPT-345)
AG # AG030721

USES MP 480
FB



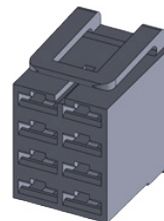
\$3.63

**CONNECTOR, LIGHT
2-WAY**
RPLC: 02965980,
245414C1
AG # AG245414C1



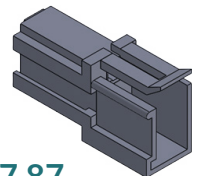
\$2.42

**FORD
CONNECTOR, SWITCH LAMP**
REPL: 613 398
AG # AG072922



\$7.51

**FORD / CASE / IH
CONNECTOR, 8 WAY
SWITCH**
REPL: 696289
AG # AG041622



\$7.87

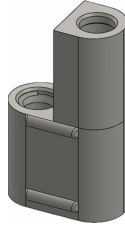
**FORD
REAR LAMP CONNECTOR**
AG # AG030721
USES MP 480
MB

.180 BULLET CONNECTORS



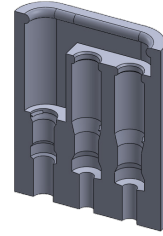
1 -WAY
W/ SEAL LIP
MALE - AG # AG021423
FEMALE - AG # AG021323

\$1.37-
\$3.97



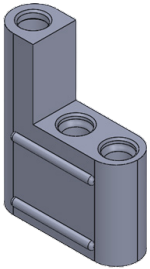
2 -WAY - UNIVERSAL
16GA , 14GA - AG # AG017122
12GA, 10GA - AG # AG037122

\$2.11



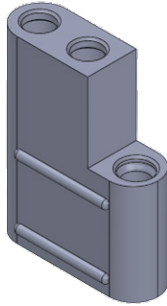
3-WAY - 2F X 1M
W/ SEAL LIP
W/ SEAL LIP - FORD, JEEP
AG # AG020223

\$8.53



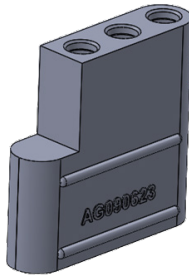
3 -WAY
AG # AG042423

\$4.13



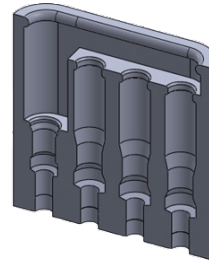
3 -WAY
AG # AG042623

\$4.26



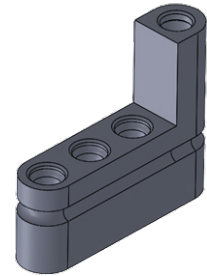
3 -WAY
AG # AG090323

\$6.34



4 -WAY
AG # AG022125

\$11.13



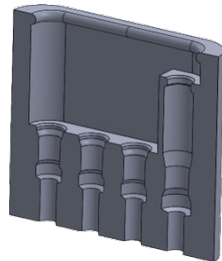
4 -WAY
AG # AG041323

\$5.15



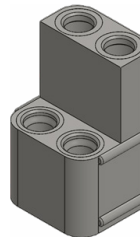
4 -WAY
AG # AG092023

\$6.02



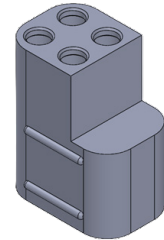
4 -WAY
AG # AG092123

\$11.46



4-WAY - 2M X 2F
FORD REGULATOR
AG # AG012422

\$4.54



4 -WAY
AG # AG042123

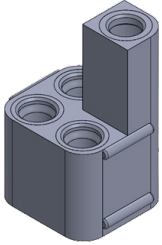
\$8.73

Agri-Services bullet connectors are made from abrasion resistant material that replicates injection molding with no mold charges or order minimums.

We use additive manufacturing to produce parts for any combination of polarities and wire size.

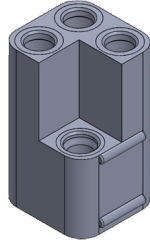
TERMINALS ARE INCLUDED WITH EACH CONNECTOR

.180 BULLET CONNECTORS



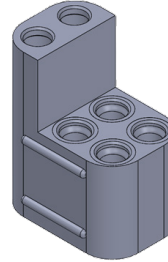
4-WAY - 3M X 1F
AG # AG071423

\$3.92



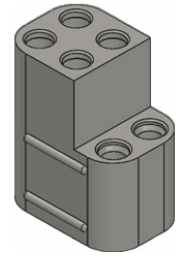
4-WAY - 1M X 3F
AG # AG092223

\$5.26



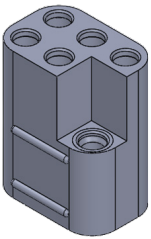
6-WAY - 4M X 2F
AG # AG092323

\$7.38



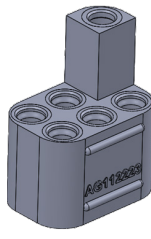
6-WAY - 2M X 4F
CASE / ALLIS CHALMERS
AG # AG021523

\$9.05



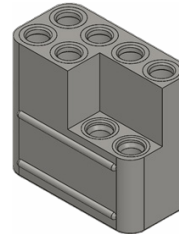
6-WAY - 1M X 5F
AG # AG051823

\$9.30



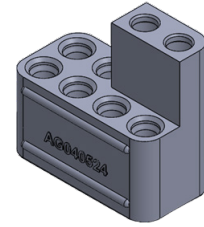
6-WAY - 5M X 1F
AG # AG112223

\$6.70



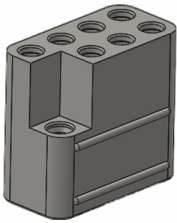
8-WAY - 2M X 6F
AG # AG021623

\$12.41



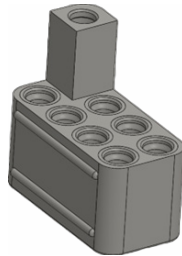
8-WAY - 6M X 2F
AG # AG021623

\$9.68



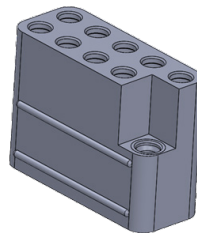
8-WAY - 1M X 7F
FORD
AG # AG031023

\$13.02



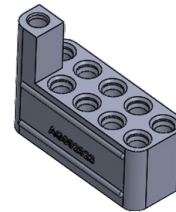
8-WAY - 7M X 1F
FORD
AG # AG030923

\$9.05



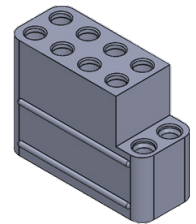
10-WAY - 1M X 9F
AG # AG092823

\$17.00



10-WAY - 9M X 1F
AG # AG070924

\$11.65

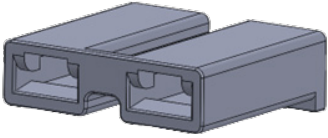


10-WAY - 2M X 8F
AG # AG042523

\$17.71

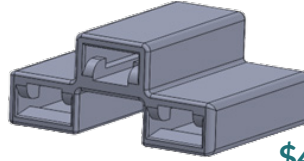
TERMINALS ARE INCLUDED WITH EACH CONNECTOR

JOHN DEERE CONNECTORS



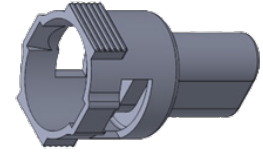
\$3.49

2-WAY FEMALE BLADE
JOHN DEERE LGT
REPLACES: 0296-4896
AG # AG0296-4896



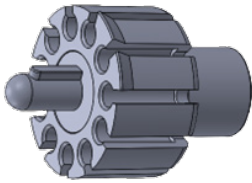
\$4.58

3 -WAY -FEMALE BLADE
JOHN DEERE LGT
REPLACES: 0296-5114
AG # AG0296-5114



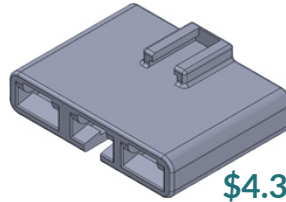
\$6.11

CONNECTOR, JD PARKING BRAKE
JOHN DEERE UTILITY
W/ SEAL
AG# AG030621



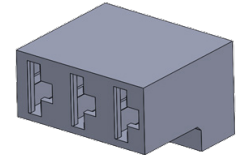
\$16.26

CONNECTOR,
CLUSTER
REPL: 933695
JEEP, JOHN DEERE
AG # AG071120



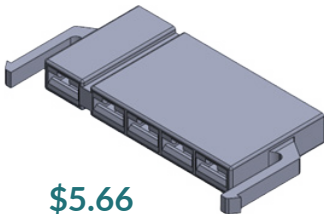
\$4.31

CONNECTOR, 10A RECTIFIER, 3 WAY
JOHN DEERE LGT
REPLACES: 10298-4959
AG # AG0298-4959



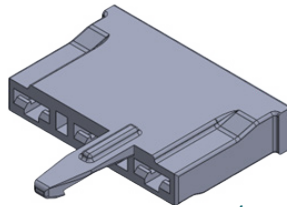
\$2.86

CONNECTOR, 3-WAY
BUZZER
JOHN DEERE
REPLACES: 180929
AG # AG180929



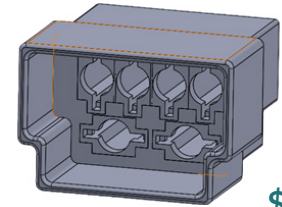
\$5.66

CONNECTOR, RECTIFIER, 5-WAY
JOHN DEERE LGT
REPLACES: 110-22004,
500-22010
6023-4105
AG # AG111421



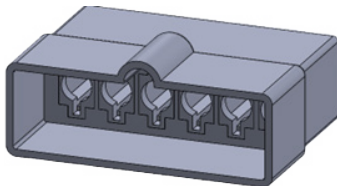
\$6.03

CONNECTOR, FUSE BLOCK
JOHN DEERE COMPACT
AG # AG102822



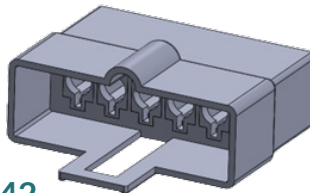
\$7.76

CONNECTOR, 6 WAY MALE
W/O TAB
AC, JD INDUSTRIAL
REPLACES: T25313
AG # AG102622



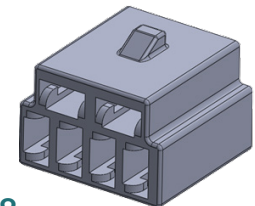
\$8.25

CONNECTOR, 6 WAY
MALE W/O TAB
JD INDUSTRIAL
REPLACES: T21203
AG # AGT21203



\$8.42

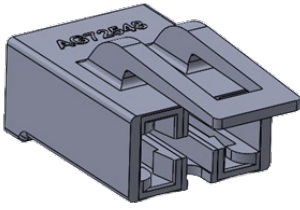
CONNECTOR, 6 WAY
RPL: 0628-8539
AG # AG0628-8539



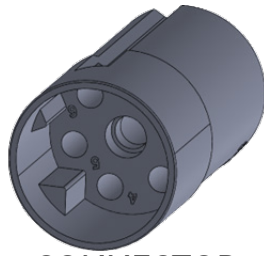
\$6.28

CONNECTOR, 6 WAY,
RPL: 0628-8699,
0297-3903
AG # AG0297-3890

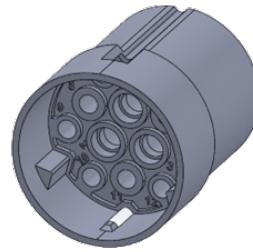
JOHN DEERE CONNECTORS



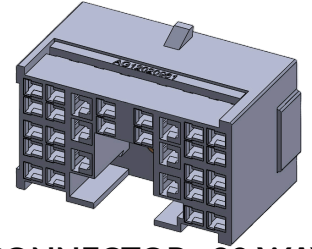
CONNECTOR, SEAT SWITCH
REPLACES:
 JD PN 57M7974
 DELTA # 72548
 AG # AG72548
\$13.92



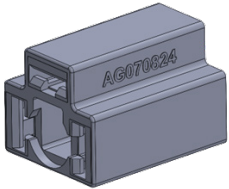
CONNECTOR, CIRCULAR - 7 WAY PIN
REPLACES
 AMP 927395-2,
 JD L36672
 AG # AG927395-2
\$8.74



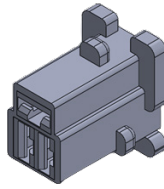
CONNECTOR, CIRCULAR - 12 WAY PIN
REPLACES
 AMP 925281-2
 JD L35421
 AG # AG925281-2
\$16.50



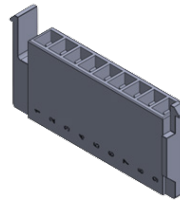
CONNECTOR, 30 WAY
 - INCLUDES TPA -
REPLACES:
 R134934, 1204-1169
 AG # AG12041169
W/O TERMS \$35.00 **W/TERMS \$66.44**



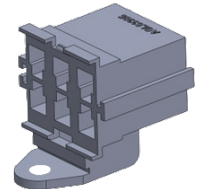
CONNECTOR, 3 WAY - FUEL GAUGE
 AG # AG070824
\$4.19



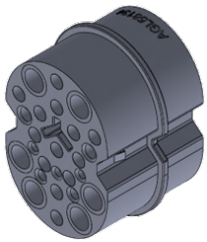
CONNECTOR, HEADLAMP HARNESS
 AG # AG102622
\$4.06



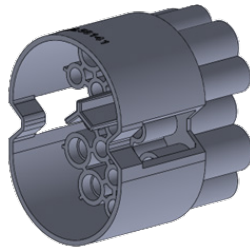
CONNECTOR, 9 WAY - TIMER
 AG # AG102622
\$11.56



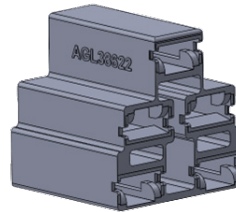
FUSE BLOCK - 3 WAY
 REP: JD # L63385
 AG # AGL63385
\$17.34



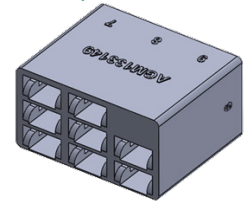
CONNECTOR, 19 WAY PLUG
 REPL: L58134
 AG # AGL58134
\$21.61



CONNECTOR, 19 WAY PIN
 REPL: L58141
 AG # AGL58141
\$21.06

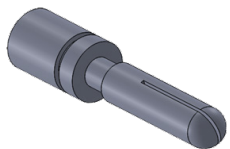


CONNECTOR, SWITCH - 5 WAY
 USES TYP 56 TERMS
 RPL: L38622
 AG # AGL38622
\$6.28

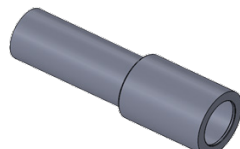


CONNECTOR, 8-WAY - PTO SWITCH
 RPL: M133149
 AG # AGM133149
\$6.40

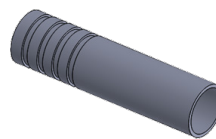
JOHN DEERE POWER CONNECTORS +BOOTS



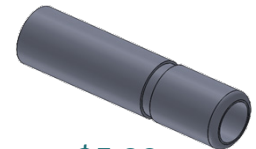
\$9.18
MALE POWER PIN
 ACCEPTS 6 GA WIRE
 REPL: 2973675
 AG # AG060218



\$6.28
MALE BOOT
 USE W/ AG060218
 AG # AG030221

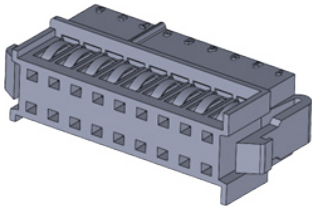


\$5.02
FEMALE POWER SOCKET
 ACCEPTS 6 GA WIRE
 REPL: 6288314
 AG # AG060318

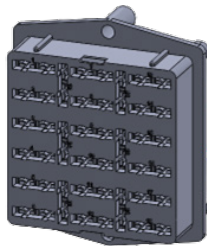


\$5.29
FEMALE BOOT
 USE W/ AG060318
 AG # AG030221

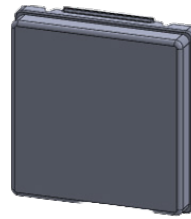
FORD CONNECTORS



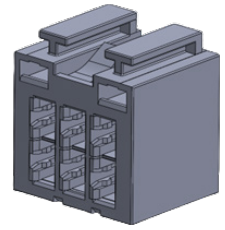
CONNECTOR, INSTRUMENT CLUSTER, FORD, NH
 REPL: D4ZB-14489-BA
 AG # AG080522
 USES 6288108 TERMINALS
\$22.52



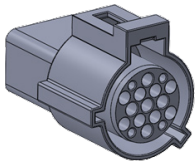
FORD FUSE BLOCK, 24 WAY
 REPL: E2NN14N030AA
 AG # AG080922
\$143.04



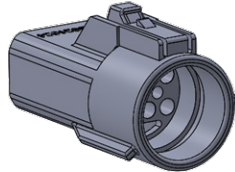
COVER, FUSE BLOCK, 24 WAY
 REPL: E4NN14A075AA
 AG # AG080922-1
\$22.76



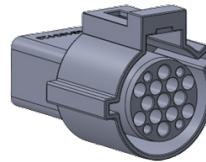
FUSE BLOCK, 3-WAY ATC FUSE FORD - SHIBAURA
 INCL: COVER, USES MP630
 AG # AG121223
\$23.36



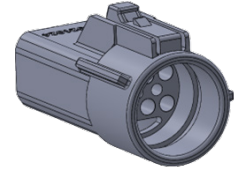
8-WAY FEMALE
 REPL: WPT172
 INCL: MULTI-MATE TERM
 AG # AG092523
\$40.00



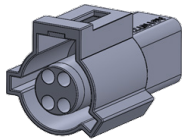
8-WAY MALE
 REPL: WPT174
 INCL: MULTI-MATE TERM
 AG # AG092523
\$35.38



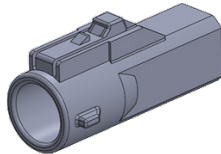
8-WAY FEMALE
 REPL: WPT737
 INCL: MULTI-MATE TERM
 AG # AG103123
\$40.00



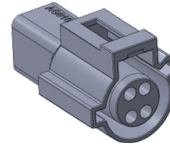
8-WAY MALE
 REPL: WPT257
 INCL: MULTI-MATE TERM
 AG # AG103123
\$35.38



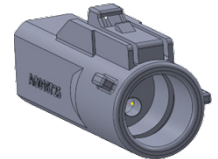
4-WAY FEMALE
 REPL: S627, EC98, WPT152
 INCL: MULTI-MATE TERM
 AG # AG100723
\$21.11



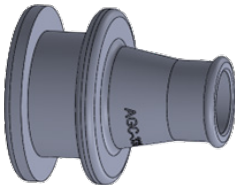
4-WAY MALE
 REPL: S2219, WPT225, WPT390
 INCL: MULTI-MATE TERM
 AG # AG010625
\$13.95



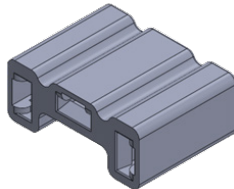
4-WAY FEMALE
 REPL: WPT111, WPT818, WT56822
 INCL: MULTI-MATE TERM
 AG # AG010525
\$21.11



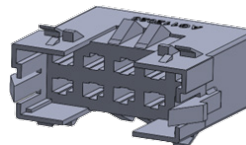
4-WAY MALE
 REPL: WPT330, WPT335, WPT1298
 INCL: MULTI-MATE TERM
 AG # AG010725
\$13.95



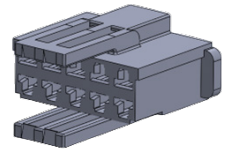
GROMMET, PWR SHIFT TRANS HARN
 AG # AGC-331
\$13.44



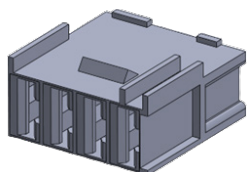
CONNECTOR, 3 WAY FUEL SELECTOR
 AG # AG080422
\$6.17



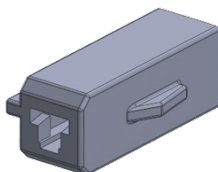
CONNECTOR, 10-WAY MALE
 USES M/P 480 TERM
 AG # AG102023
\$20.23



CONNECTOR, 10-WAY FEMALE
 AG # AG102123
\$15.66



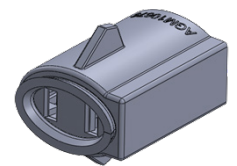
CONNECTOR, 4-WAY - NS HARNESS
 AG # AG060623
\$2.01



FORD 4X4 SOLENOID
 REPL: WPT407
 USES MP480 TERMS
 AG # AGWPT407
\$2.77

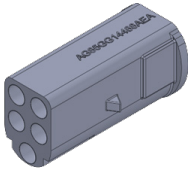


CONNECTOR, 3 WAY PIN
 REPL: E5AB_14A624_AA
 USES MULTIMATE TERMS
 AG # AGE5AB_14A624_AA
\$6.50



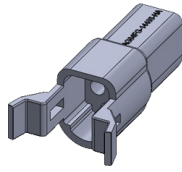
CONN, 2 WAY POWER
 REPL: M10675
 USES MP480 NOT INCL
 AG # AGM10675
\$14.04

FORD CONNECTORS



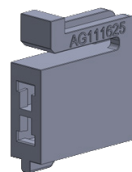
CONN, 5 WAY SOC
USES MULTI-MATE TERMS
AG# AG85GG14488AEA

\$2.89



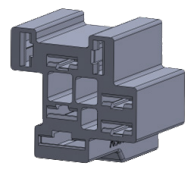
CONN, 5 WAY PIN
USES MULTI-MATE TERMS
AG# AG84FG-14488-HA

\$6.50



CONN, 2 WAY,
AC CLUTCH
REPL: WPT1110, WPT132
USES MP280 TERMS
AG# AG111625

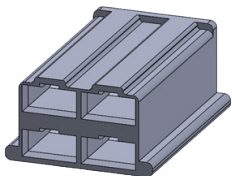
\$3.38



CONN, 7 WAY - SWITCH
USES FAST IN - FAST ONTERMS
AG# AG111625

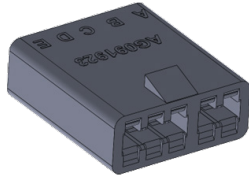
\$9.80

FARMALL / IH CONNECTORS



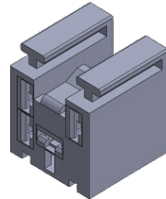
CONNECTOR, 4 WAY
- LONG
IH 04, 06 SERIES
REPL: 0296-2913
AG# AG0296-2913

\$7.63



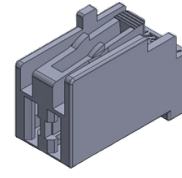
CONNECTOR, WATER
LEVEL
INCL: TERMINALS
AG# AG091923

\$6.86



4 WAY RELAY
CONNECTOR
AG# AG091624

\$10.34



CONNECTOR,
WATER TEMP
AG# AG091923

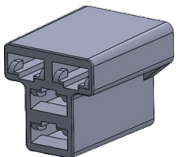
\$2.65



ASSY, HEADLIGHT
WIRING
AG# AG391005R91L

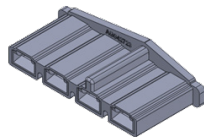
\$34.00

MISC. CONNECTORS



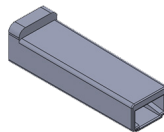
4-WAY
RPL: 0298-4570
AG# AG0298-4570

\$5.42



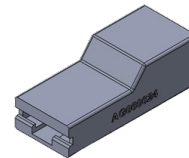
CONNECTOR,
REGULATOR
RPL: HP4435,
110-12063
AG# AG042723

\$6.50



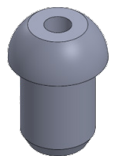
1-WAY FEMALE
BLADE
RPL: 0297-3453
AG# AG0297-3453

\$1.62



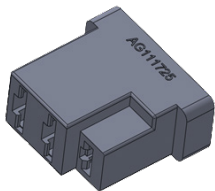
HOUSING, .375 FEMALE
AMP 280755-4,
57M7071 TERMS
AG# AG060624

\$1.55



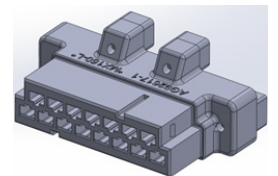
BUSHING, WIRING
HARNESS
RPL: 763204M1
AG# AG765398M1

\$1.80



ALTERNATOR CONN,
LUCAS - STRAIGHT
RPL:
AG# AG111725

\$7.02



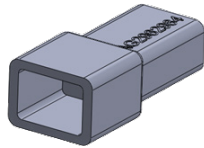
ASSY, CONNECTOR -
HIGH AMP
INCL: MX150-L TERMS
RPL: AMP 926171-1
AG# AG050825

\$33.26

MISC. CONNECTORS

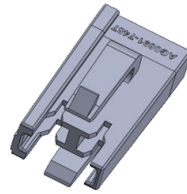


PLUG, BRAKE DRUM
RPL: 763204M1
AG# AG763204M1
\$9.01



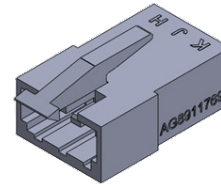
**HOUSING, 1 WAY
MALE, W/O LOCK**
RPL: 2962984
AG# AG2962984

\$2.53



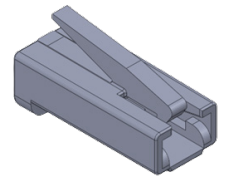
**2 WAY
PACK-CON III**
RPL: 0891-7487
AG# AG0891-7487

\$7.51



**3 WAY
PACK-CON I**
RPL: 0891-1769
AG# AG8911769

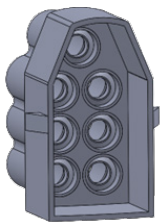
\$5.85



**HOUSING, 1 WAY
FEMALE, W/ LOCK**
RPL: 0891-7882
AG# AG0891-7882

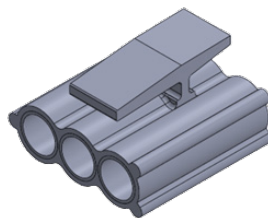
\$1.38

LUCAS CONNECTORS



**7 WAY LUCAS/RISTS
PIN HOUSING**
REPL: 51150010
AG# AG51150010

\$5.05



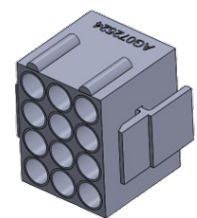
**3 WAY LUCAS/RISTS
SOCKET HOUSING**
REPL: 51150007
AG# AG51150007

\$2.59



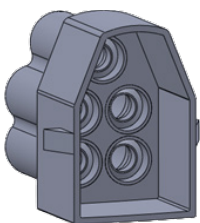
**1 WAY LUCAS/RISTS
SOCKET HOUSING**
REPL: 51150006
AG# AG51150006

\$0.49



**12 WAY LUCAS/RISTS
SOCKET HOUSING**
REPL: 51150010
AG# AG072524

\$8.19



**5 WAY LUCAS/RISTS
PIN HOUSING**
REPL: 51150275
AG# AG022025

\$5.05