



AGRI-SERVICES

WIRING HARNESS SPECIALISTS

OBSOLETE - LOW VOLUME – HARD TO FIND

- REVERSE ENGINEERING
- ADDITIVE MANUFACTURING
- PRODUCT DESIGN

Agri-Services has begun manufacturing obsolete molded parts for farm tractors and other equipment. Reverse engineering from originals, our products improve on the original design in many ways, including the use of common terminals and modern materials.

We use multiple manufacturing methods to create custom products for our customers.

Using the additive manufacturing experience of our engineering staff and our industrial DLP 3D printer, we can produce your prototypes and finished products with accuracy and repeatability. No minimum quantities are required. Details such as lettering and numbers can be included to meet your specifications. Our machine is capable of printing with several resins that range in hardness from soft rubber like to hard ridged properties. There are several materials that also have high heat resistance.

✉ info@wiringharnesses.com

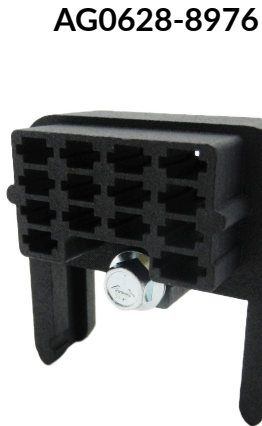
📞 716-937-6618

📍 13899 North Rd, Alden, NY, 14004

BULKHEAD CONNECTORS



AG0628-8890



AG0628-8976



AG0628-8896
INCLUDES BOLT

28 WAY FIREWALL BULKHEAD

REPLACES: 0628-8890, 0628-8896, 0628-8976

John Deere, Jeep, Case

ASSOCIATED PARTS:

- AG0628-8890 \$23.52
- AG0628-8896 \$36.46
- AG0628-8976 + GASKET \$91.71
- AG0628-8875_GASKET (NOT SHOWN) \$2.80

40 WAY FIREWALL BULKHEAD

REPLACES: 1201-0289, 1201-0327, 0891-7252

Case + Massey Ferguson

ASSOCIATED PARTS:

- AG1201-0289 \$28.58
- AG0891-7252 \$45.57
- AG1201-0327 + GASKET \$105.73
- AG12010328_GASKET (NOT SHOWN) \$2.35



AG1201-0289

AG1201-0326

AG0891-7252
INCLUDES BOLT



AGD3AB-14489

21 WAY FIREWALL BULKHEAD

REPLACES: D3AB-14489, D20B-14489

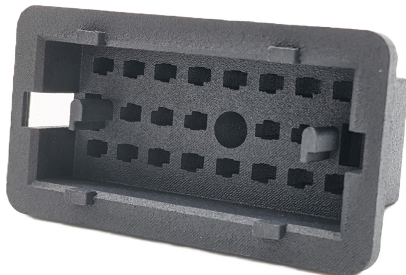
Ford

ASSOCIATED PARTS:

- AGD20B-14489 \$72.58
- AGD3AB-14489 \$70.37

ENGINEERED TO USE MP 480
TERMINALS
ALL FORD CONNECTORS
INTERCHANGE TO ORIGINALS

AGD20B-14489
INCLUDES BOLT



LIGHT + RELATED CONNECTORS

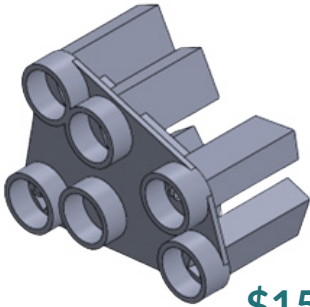
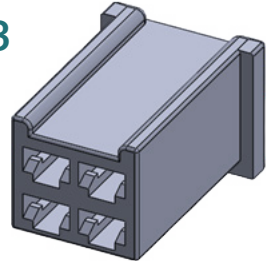


\$8.83

HOBBS/IHC
TURNSIGNAL SWITCH
AGRI-SERVICES PN: AG23343
REPLACES HOBBS / IHC:
23343 / 121597C1

\$1.13

JOHN DEERE COMPACT
CONNECTOR, INDICATER
LAMP
AGRI-SERVICES PN:
AGAR83425
USES 62572 FB

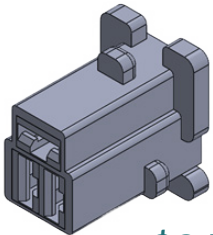
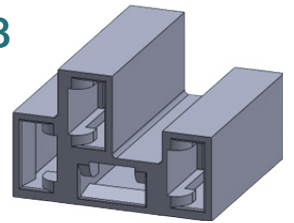


\$15.30

JOHN DEERE
LIGHT SWITCH
AGRI-SERVICES PN: AGAR83425
REPLACES:
AR83425

\$4.28

CASE / IH
CONNECTOR, FLASHER
AGRI-SERVICES PN: AG091522

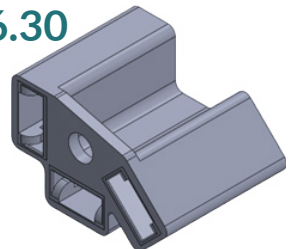


\$3.71

JOHN DEERE COMPACT
CONNECTOR, HEADLAMP
HARNESS
AGRI-SERVICES PN: AG102622

\$6.30

AGCO
CONNECTOR, 3 WAY, TYP
59 LIGHTS
AGRI-SERVICES PN:
AG12041307
REPLACES 1204-1307



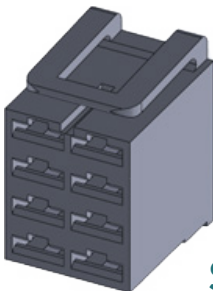
\$8.82

JOHN DEERE
LAMP SOCKET
AGRI-SERVICES PN:
AGAT44165N

REPLACES:
AT44165N

\$3.39

FORD
REAR LAMP CONNECTOR
AGRI-SERVICES PN: AG030721
REPLACES:
3U2Z-14S411-CSA
(WPT-345)
USES MP 480
FB



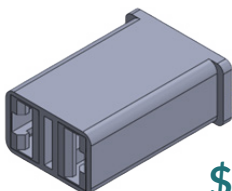
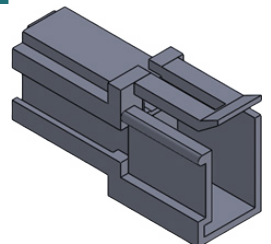
\$6.98

FORD / CASE / IH
CONNECTOR, 8 WAY - SWITCH
AGRI-SERVICES PN: AG041622

REPLACES:
696289

\$7.31

FORD
REAR LAMP CONNECTOR
AGRI-SERVICES PN: AG030721
USES MP 480
MB



\$2.25

FORD
CONNECTOR, SWITCH LAMP
AGRI-SERVICES PN: AG072922

REPLACES:
613 398

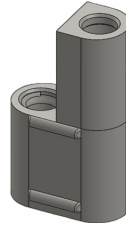
BULLET CONNECTORS

.180" BULLET



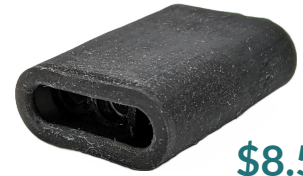
\$1.35-4.08

1 -WAY
W/ SEAL LIP
MALE - PN AG021423
FEMALE - PN AG021323



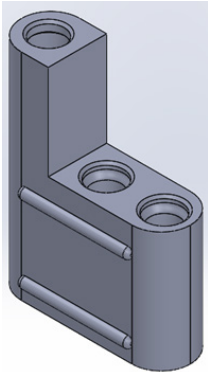
\$2.11

2 -WAY - UNIVERSAL
16GA, 14GA - PN AG017122
12GA, 10GA - PN AG037122

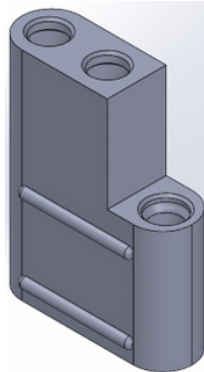


\$8.53

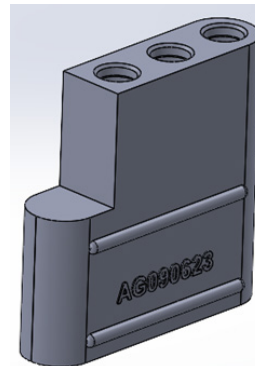
3-WAY - 2F X 1M
W/ SEAL LIP
W/ SEAL LIP - FORD, JEEP
PN AG020223



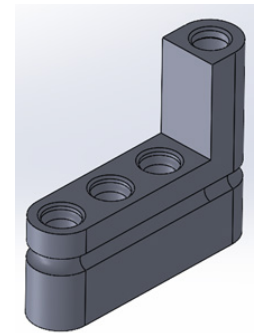
3 -WAY
PN AG042423
\$4.13



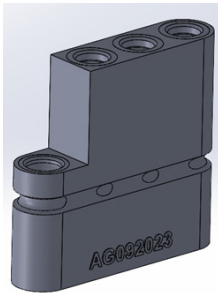
3 -WAY
PN AG042623
\$4.26



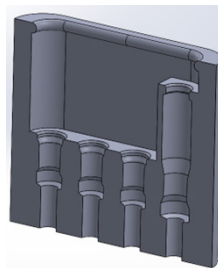
3 -WAY
PN AG090323
\$6.34



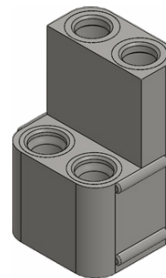
4 -WAY
PN AG041323
\$5.15



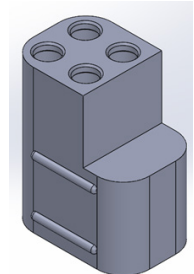
4 -WAY
PN AG092023
\$6.02



4 -WAY
PN AG092123
\$11.46



4-WAY - 2M X 2F
FORD REGULATOR
PN AG017122
\$4.54



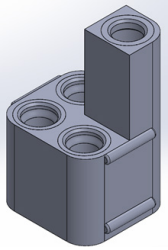
4 -WAY
PN AG042123
\$8.73

Agri-Services bullet connectors are made from abrasion resistant material that replicates injection molding with no mold charges or order minimums.

We use additive manufacturing to produce parts for any combination of polarities and wire size.

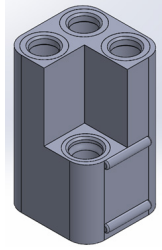
TERMINALS ARE INCLUDED WITH EACH CONNECTOR

BULLET CONNECTORS



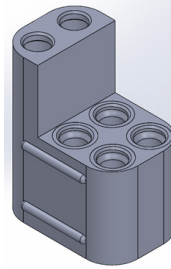
4-WAY - 3M X 1F
PN AG071423

\$3.92



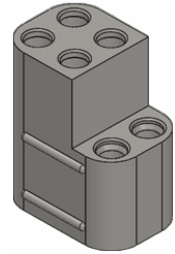
4-WAY - 1M X 3F
PN AG092223

\$5.26



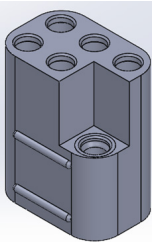
6-WAY - 4M X 2F
PN AG092323

\$7.38



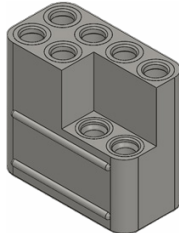
6-WAY - 2M X 4F
CASE / ALLIS CHALMERS
PN AG021523

\$9.05



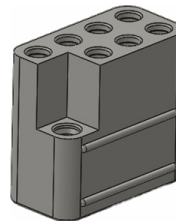
6-WAY - 1M X 5F
PN AG051823

\$9.30



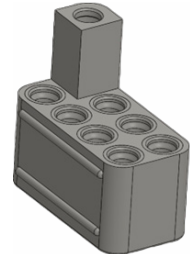
8-WAY - 2M X 6F
PN AG021623

\$12.41



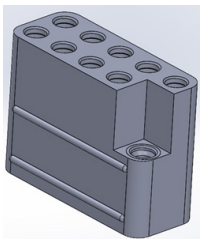
8-WAY - 1M X 7F
FORD
PN AG031023

\$13.02



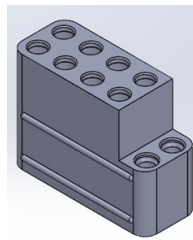
8-WAY - 7M X 1F
FORD
PN AG030923

\$9.05



10-WAY - 1M X 9F
PN AG092823

\$17.00



8-WAY - 2M X 8F
PN AG042523

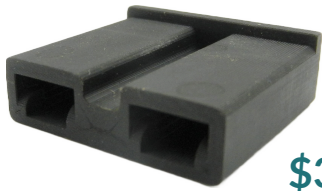
\$17.71

Agri-Services bullet connectors are made from abrasion resistant material that replicates injection molding with no mold charges or order minimums.

We use additive manufacturing to produce parts for any combination of polarities and wire size.

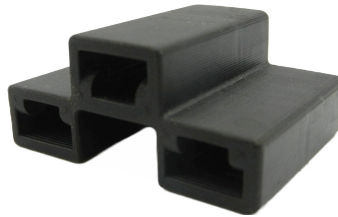
TERMINALS ARE INCLUDED WITH EACH CONNECTOR

JOHN DEERE CONNECTORS



\$3.26

2-WAY FEMALE BLADE
JOHN DEERE LGT
REPLACES: 0296-4896
PN AG0296-4896



\$4.19

3-WAY FEMALE BLADE
JOHN DEERE LGT
REPLACES: 0296-5114
PN AG0296-5114



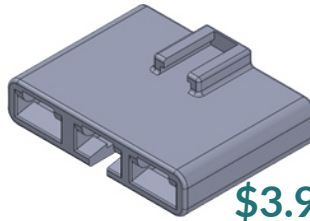
\$5.30

CONNECTOR, JD PARKING BRAKE
JOHN DEERE UTILITY
W/ SEAL
PN AG030621



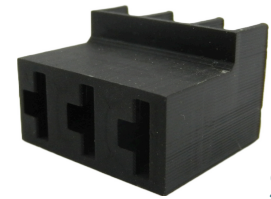
\$15.19

CONNECTOR,
CLUSTER
JEEP, JOHN DEERE
PN AG071120



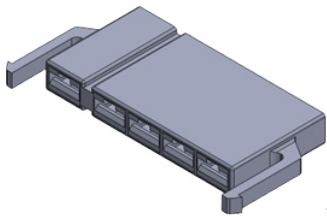
\$3.94

CONNECTOR, 10A RECTIFIER, 3 WAY
JOHN DEERE LGT
REPLACES: 10298-4959
PN AG0298-4959



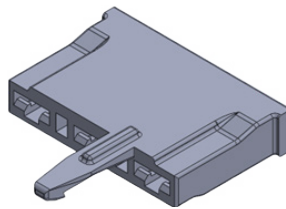
\$2.61

CONNECTOR, 3-WAY BUZZER
JOHN DEERE UTILITY
REPLACES: 180929
PN AG180929



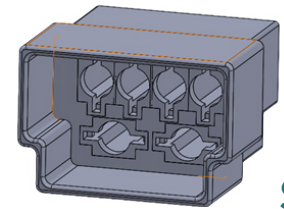
\$5.18

CONNECTOR, RECTIFIER, 5-WAY
JOHN DEERE LGT
REPLACES: 110-22004, 500-22010
PN AG111421



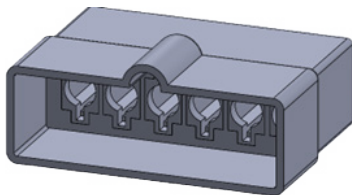
\$5.51

CONNECTOR, FUSE BLOCK
JOHN DEERE COMPACT
PN AG102822

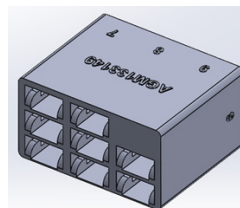


\$7.09

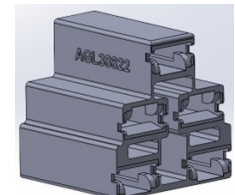
CONNECTOR, 6 WAY MALE
W/O TAB
AC, JD INDUSTRIAL
REPLACES: T25313
PN AG102622



CONNECTOR, 6 WAY MALE
W/O TAB
JD INDUSTRIAL
REPLACES: T21203
PN AGT21203
\$7.54

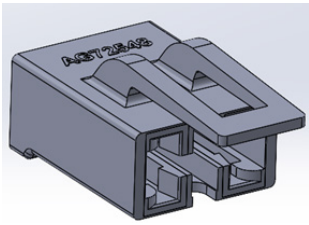


CONNECTOR, 8-WAY
- PTO SWITCH
RPL: M133149
AGM133149
\$5.85

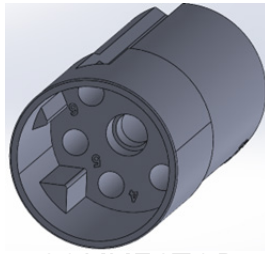


CONNECTOR,
SWITCH - 5 WAY
USES TYP 56 TERMS
RPL: L38622
AGL38622
\$5.74

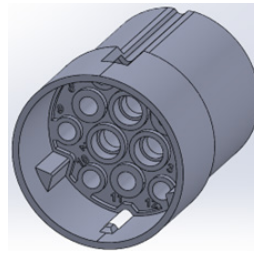
JOHN DEERE CONNECTORS CONT.



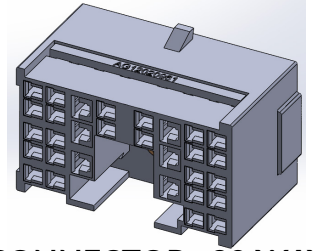
CONNECTOR, SEAT SWITCH
REPLACES:
JD PN 57M7974
DELTA # 72548
AG72548
\$12.72



CONNECTOR, CIRCULAR - 7 WAY PIN
REPLACES
AMP 927395-2
AG927395-2
\$7.99

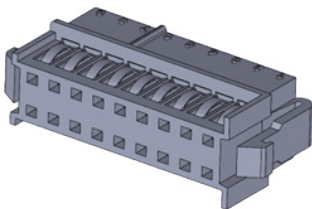


CONNECTOR, CIRCULAR - 12 WAY PIN
REPLACES
AMP 925281-2
AG925281-2
\$15.08

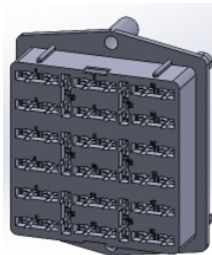


CONNECTOR, 30 WAY FEMALE, M/P 280 480
- INCLUDES TPA -
REPLACES
1204-1169
AG12041169
\$35.00

FORD CONNECTORS



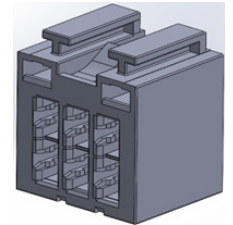
CONNECTOR, INSTRUMENT CLUSTER
FORD, NH
REPLACES: D4ZB-14489-BA
PN AG080522
USES 6288108 TERMINALS
\$20.93



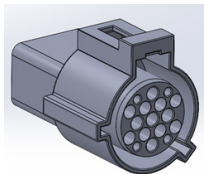
FORD FUSE BLOCK, 24 WAY
AG080922
\$133.80



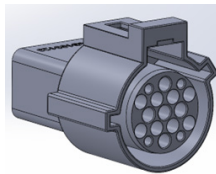
COVER, FUSE BLOCK, 24 WAY
AG080922-1
\$18.45



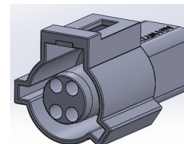
FUSE BLOCK, 3-WAY ATC FUSE
FORD - SHIBAURA
INCLUDES COVER, USES MP630
AG121223
\$22.00



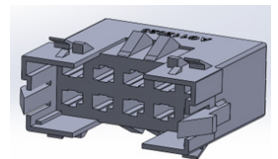
8-WAY CONNECTOR
REPLACES: WPT172
INCLUDES MULTI-MATE 7 TERM
AG092523
\$40.00



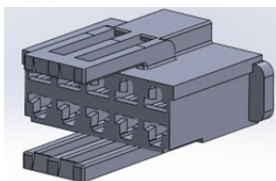
8-WAY CONNECTOR
REPLACES: WPT737
INCLUDES MULTI-MATE 7 TERM
AG103123
\$40.00



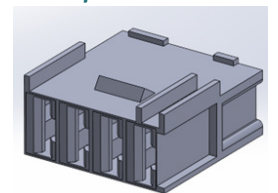
4-WAY CONNECTOR
REPLACES: S627, EC98,
WPT152
INCLUDES MULTI-MATE 7 TERM
AG100723
\$20.46



CONNECTOR, 10-WAY MALE
USES M/P 480 TERM
AG102023
\$18.90

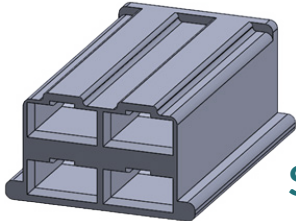


CONNECTOR, 10-WAY FEMALE
AG102123
\$14.63



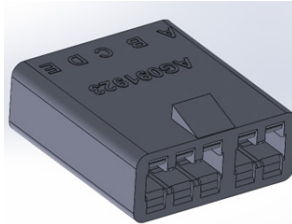
CONNECTOR, 4-WAY - NS HARNESS
AG060623
\$6.86

FARMALL / INTERNATIONAL CONNECTORS



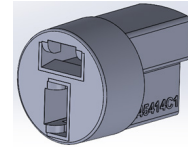
\$7.09

CONNECTOR, 4 WAY
- LONG
IH 04, 06 SERIES
REPLACES: 0296-2913
PN AG0296-2913



CONNECTOR, WATER
LEVEL
INCLUDES TERMINALS
AG091923

\$6.86

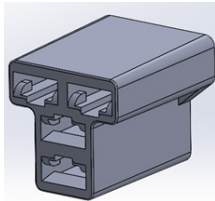


CONNECTOR, LIGHT
2-WAY

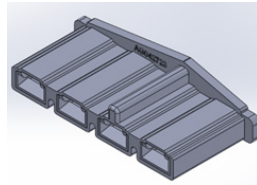
RPLC: 02965980,
245414C1
AG245414C1

\$3.38

MISC. CONNECTORS

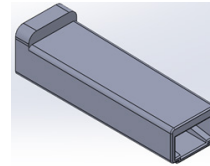


4-WAY
RPL: 0298-4570
AG0298-4570
\$18.45



CONNECTOR,
REGULATOR
RPL: HP4435,
110-12063
AG042723

\$6.08



1-WAY FEMALE
BLADE
RPL: 0297-3453
AG0297-3453

\$1.62