



AGRI-SERVICES

WIRING HARNESS SPECIALISTS

OBSOLETE - LOW VOLUME – HARD TO FIND

- REVERSE ENGINEERING
- ADDITIVE MANUFACTURING
- PRODUCT DESIGN

Agri-Services has begun manufacturing obsolete molded parts for farm tractors and other equipment. Reverse engineering from originals, our products improve on the original design in many ways, including the use of common terminals and modern materials.

We use multiple manufacturing methods to create custom products for our customers.

Using the additive manufacturing experience of our engineering staff and our industrial DLP 3D printer, we can produce your prototypes and finished products with accuracy and repeatability. No minimum quantities are required. Details such as lettering and numbers can be included to meet your specifications. Our machine is capable of printing with several resins that range in hardness from soft rubber like to hard ridged properties. There are several materials that also have high heat resistance.

✉ info@wiringharnesses.com

📞 716-937-6618

📍 13899 North Rd, Alden, NY, 14004

BULKHEAD CONNECTORS

AG0628-8890



AG0628-8896



AG0628-8976
INCLUDES BOLT

28 WAY FIREWALL BULKHEAD

REPLACES: 0628-8890, 0628-8896, 0628-8976

John Deere, Jeep, Case

ASSOCIATED PARTS:

- AG0628-8890 \$23.52
- AG0628-8896 \$36.46
- AG0628-8976 + GASKET \$91.71
- AG0628-8875_GASKET (NOT SHOWN) \$2.80

40 WAY FIREWALL BULKHEAD

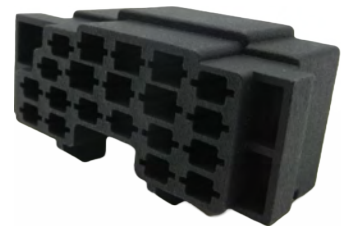
REPLACES: 1201-0289, 1201-0327, 0891-7252

Case + Massey Ferguson

ASSOCIATED PARTS:

- AG1201-0289 \$28.58
- AG0891-7252 \$45.57
- AG1201-0327 \$105.73
- AG12010328_GASKET (NOT SHOWN) \$2.35

AG1201-0289



AG1201-0327



AG0891-7252
INCLUDES BOLT



AGD3AB-14489

21 WAY FIREWALL BULKHEAD

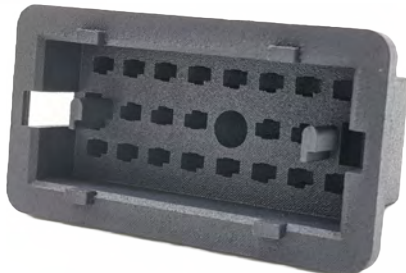
REPLACES: D3AB-14489, D20B-14489

Ford

ASSOCIATED PARTS:

- AGD20B-14489 \$72.58
- AGD3AB-14489 \$70.37

AGD20B-14489
INCLUDES BOLT



ENGINEERED TO USE MP
480 TERMINALS
ALL FORD CONNECTORS
INTERCHANGE TO ORIGINALS

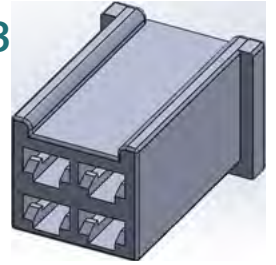
LIGHT + RELATED CONNECTORS



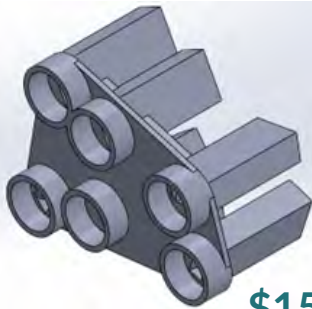
\$8.83

HOBBS/IHC
 TURNSIGNAL SWITCH
 AGRI-SERVICES PN: AG23343
 REPLACES HOBBS / IHC:
 23343 / 121597C1

\$1.13



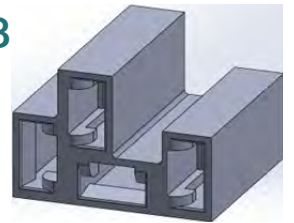
JOHN DEERE COMPACT
 CONNECTOR, INDICATER
 LAMP
 AGRI-SERVICES PN:
 AGAR83425
 USES 62572 FB



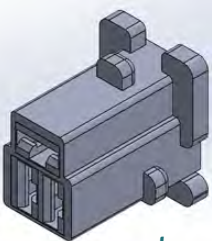
\$15.30

JOHN DEERE
 LIGHT SWITCH
 AGRI-SERVICES PN: AGAR83425
 REPLACES:
 AR83425

\$4.28



CASE / IH
 CONNECTOR, FLASHER
 AGRI-SERVICES PN: AG091522

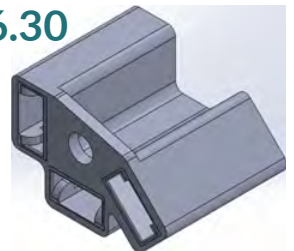


\$3.71

JOHN DEERE COMPACT
 CONNECTOR, HEADLAMP
 HARNESS
 AGRI-SERVICES PN: AG102622

\$6.30

AGCO
 CONNECTOR, 3 WAY, TYP
 59 LIGHTS
 AGRI-SERVICES PN:
 AG12041307
 REPLACES 1204-1307



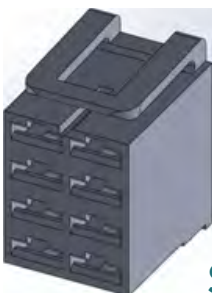
\$8.82

JOHN DEERE
 LAMP SOCKET
 AGRI-SERVICES PN:
 AGAT44165N

REPLACES:
 AT44165N

\$3.39

FORD
 REAR LAMP CONNECTOR
 AGRI-SERVICES PN: AG030721
 REPLACES:
 3U2Z-14S411-CSA
 (WPT-345)
 USES MP 480
 FB



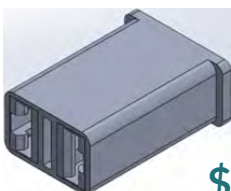
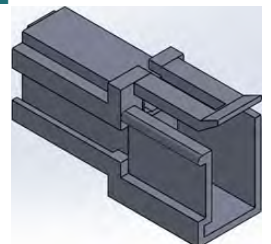
\$6.98

FORD / CASE / IH
 CONNECTOR, 8 WAY - SWITCH
 AGRI-SERVICES PN: AG041622

REPLACES:
 696289

\$7.31

FORD
 REAR LAMP CONNECTOR
 AGRI-SERVICES PN: AG030721
 USES MP 480
 MB



\$2.25

FORD
 CONNECTOR, SWITCH LAMP
 AGRI-SERVICES PN: AG072922

REPLACES:
 613 398

BULLET CONNECTORS

.180" BULLET



\$1.35-4.08

1 -WAY
W/ SEAL LIP
MALE - PN AG021423
FEMALE - PN AG021323



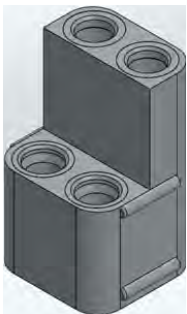
\$2.11

2 -WAY - UNIVERSAL
16GA , 14GA - PN AG017122
12GA, 10GA - PN AG037122



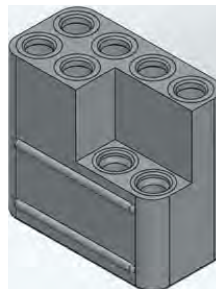
\$8.53

3-WAY - 2F X 1M
W/ SEAL LIP
W/ SEAL LIP - FORD, JEEP
PN AG020223



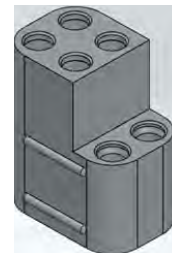
\$4.54

4-WAY - 2M X 2F
FORD REGULATOR
PN AG017122



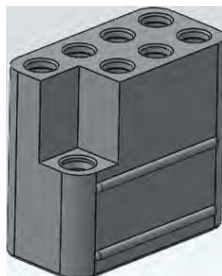
\$12.41

8-WAY - 2M X 6F
CASE / ALLIS CHALMERS
PN AG021623



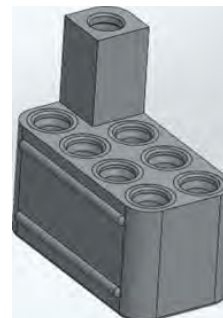
\$9.05

6-WAY - 2M X 4F
CASE / ALLIS CHALMERS
PN AG021523



\$13.02

8-WAY - 1M X 7F
FORD
PN AG031023



\$9.05

8-WAY - 7M X 1F
FORD
PN AG030923

Agri-Services bullet connectors are made from abrasion resistant material that replicates injection molding with no mold charges or order minimums.

We use additive manufacturing to produce parts for any combination of polarities and wire size.

TERMINALS ARE INCLUDED WITH EACH CONNECTOR

MISC. CONNECTORS



\$3.26

2-WAY FEMALE BLADE
JOHN DEERE LGT
REPLACES: 0296-4896
PN AG0296-4896



\$4.19

3 -WAY -FEMALE BLADE
JOHN DEERE LGT
REPLACES: 0296-5114
PN AG0296-5114



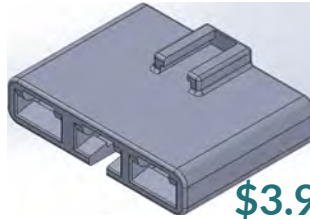
\$5.30

CONNECTOR, JD PARKING BRAKE
JOHN DEERE UTILITY
W/ SEAL
PN AG030621



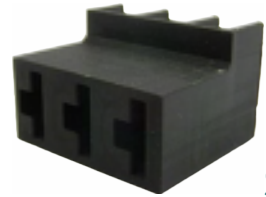
\$15.19

CONNECTOR,
CLUSTER
JEEP, JOHN DEERE
PN AG071120



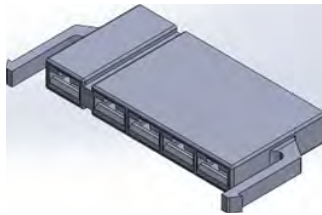
\$3.94

CONNECTOR, 10A RECTIFIER, 3 WAY
JOHN DEERE LGT
REPLACES: 10298-4959
PN AG0298-4959



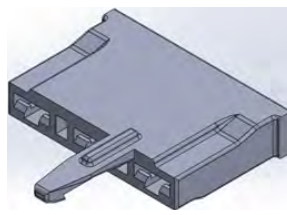
\$2.61

CONNECTOR, 3-WAY BUZZER
JOHN DEERE UTILITY
REPLACES: 180929
PN AG180929



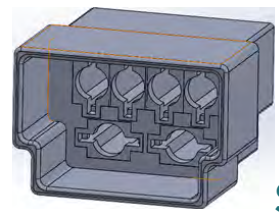
\$5.18

CONNECTOR, RECTIFIER, 5-WAY
JOHN DEERE LGT
REPLACES: 110-22004, 500-22010
PN AG111421



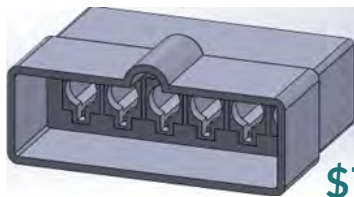
\$5.51

CONNECTOR, FUSE BLOCK
JOHN DEERE COMPACT
PN AG102822



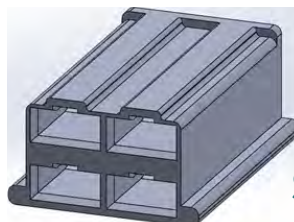
\$7.09

CONNECTOR, 6 WAY MALE
W/O TAB
AC, JD INDUSTRIAL
REPLACES: T25313
PN AG102622



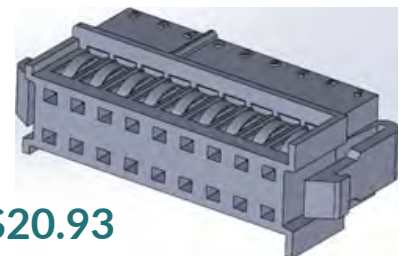
\$7.54

CONNECTOR, 6 WAY MALE
W/O TAB
JD INDUSTRIAL
REPLACES: T21203
PN AGT21203



\$7.09

CONNECTOR, 4 WAY
- LONG
IH 04, 06 SERIES
REPLACES: 0296-2913
PN AG0296-2913



\$20.93

CONNECTOR, INSTRUMENT
CLUSTER
FORD, NH
REPLACES: D4ZB-14489-BA
PN AG080522
USES 6288108 TERMINALS